

Rock Core Sample



QGC



QUEENSLAND MUSEUM NETWORK



Queensland Government

The rock core sample has been created from a much larger 435 m core. In this reproduction, 0 m indicates the most recent rock which is closest to the surface. However, the most recent rock in this sample was actually collected from 178 m below the surface, and the oldest rock was from 236 m below the surface.

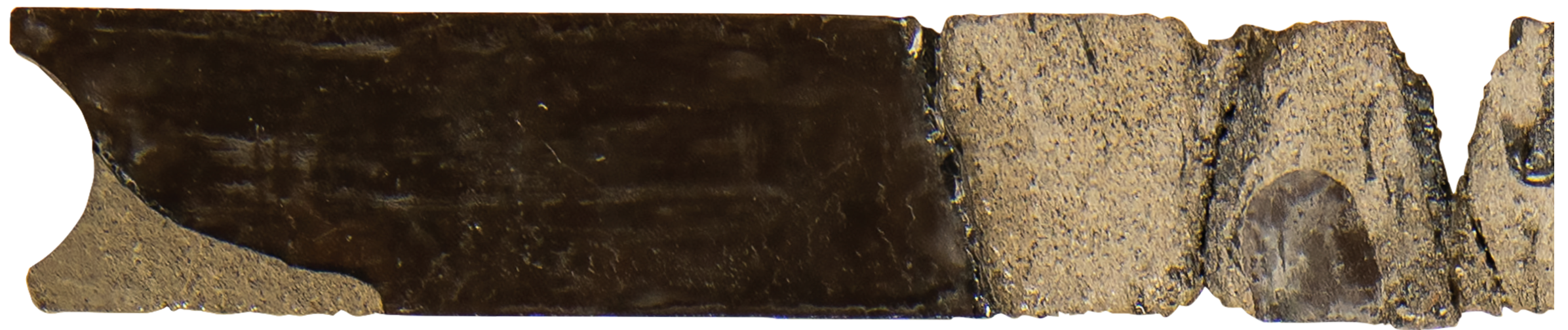
For actual size print in A3. To reproduce the 5 m core, cut out each section of the core sample. Find the corresponding sections of the core by matching the letters (for example A to A, B to B), then use clear tape or glue to attach the corresponding sections together.

This reproduction has been created by taking specific samples from the larger core so that students can see the changes in rock type throughout a core without having to recreate such a large sample. Sections of the core that are missing indicate a failure in the core sample.

FUTURE MAKERS



SANDSTONE



CARBONACEOUS CLASTS

METRE

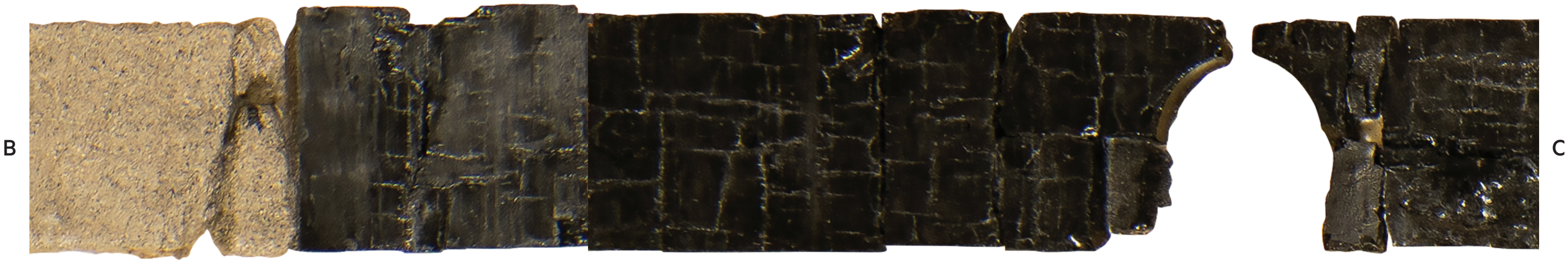


CONGLOMERATE



SANDSTONE





B

C

COAL



C

D

COAL



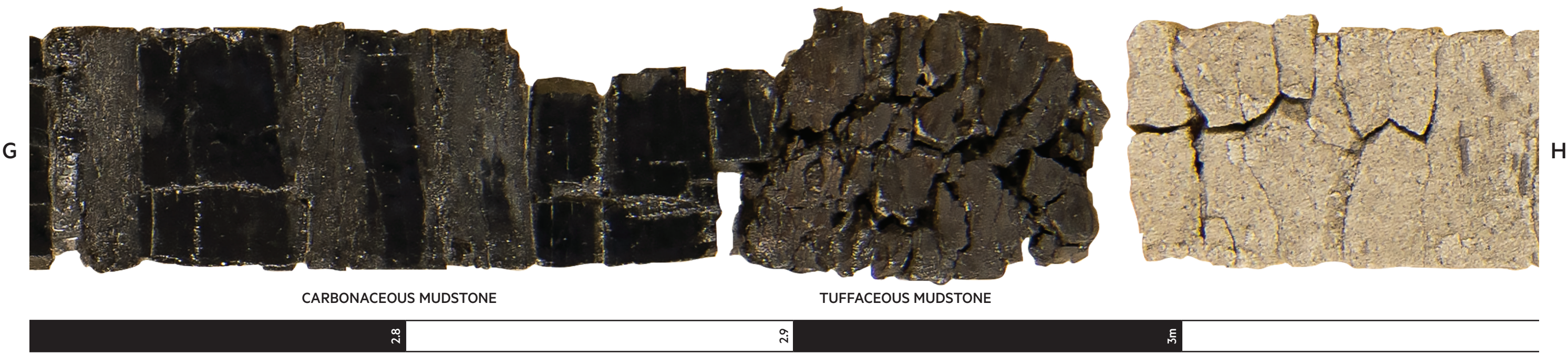
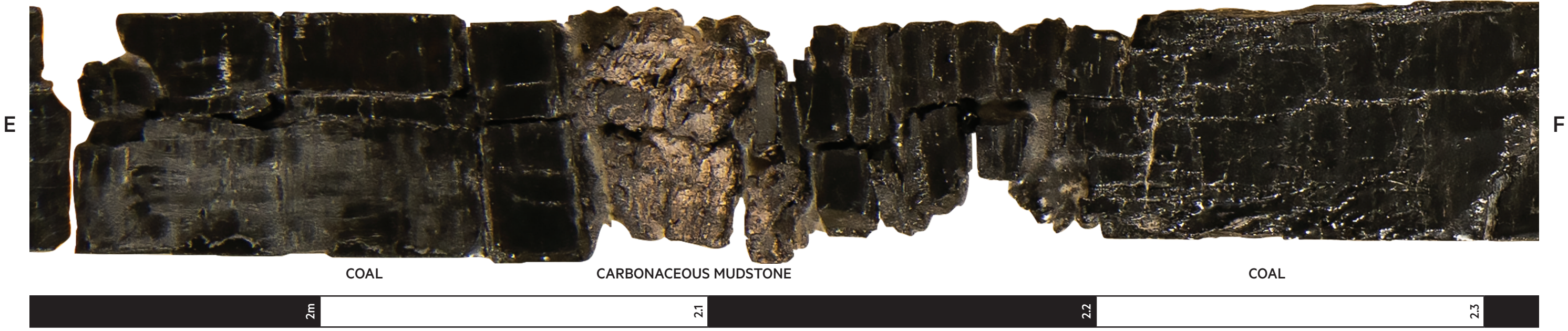
D

E

COAL

COAL





H



SANDSTONE

SANDSTONE

3.1

3.2

3.3

3.4

I

I



CARBONACEOUS MUDSTONE

SILTSTONE

3.5

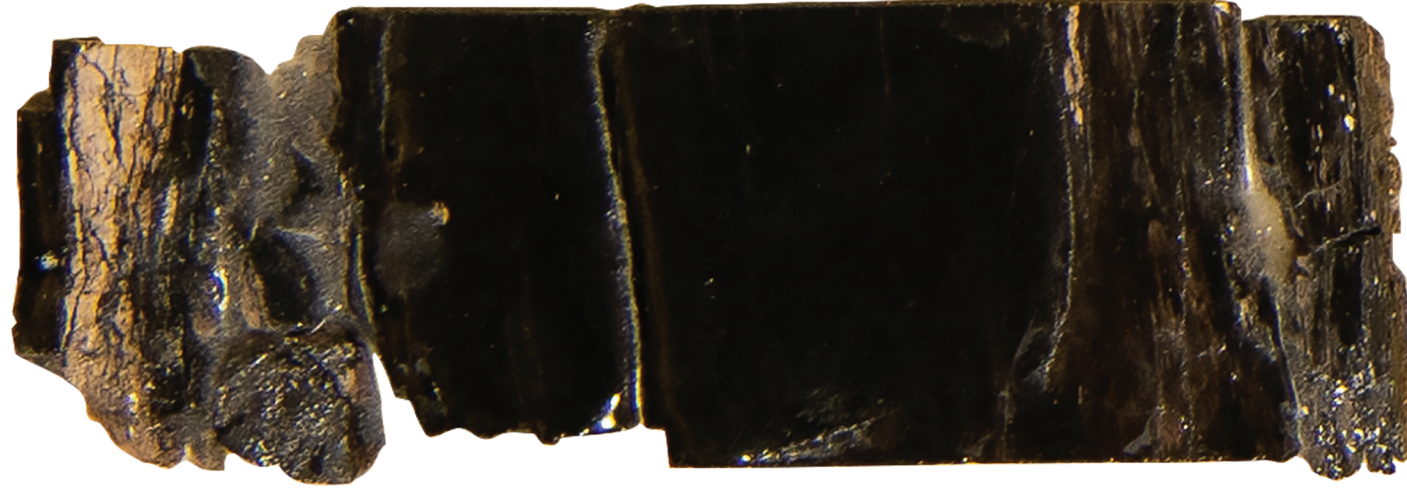
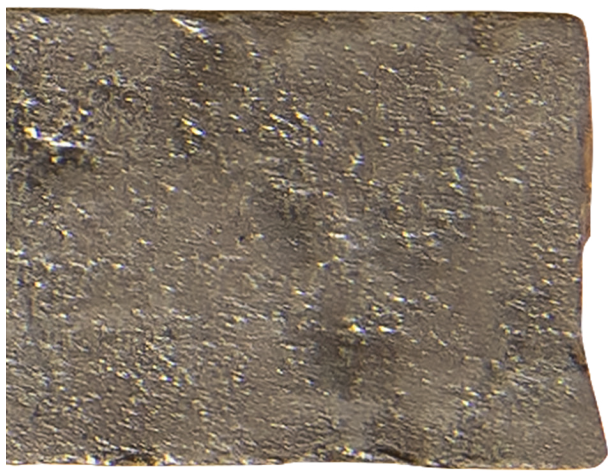
3.6

3.7

3.8

J

J



TUFF



K

3.9

4.0

4.1

4.2



CARBONACEOUS MUDSTONE

COAL

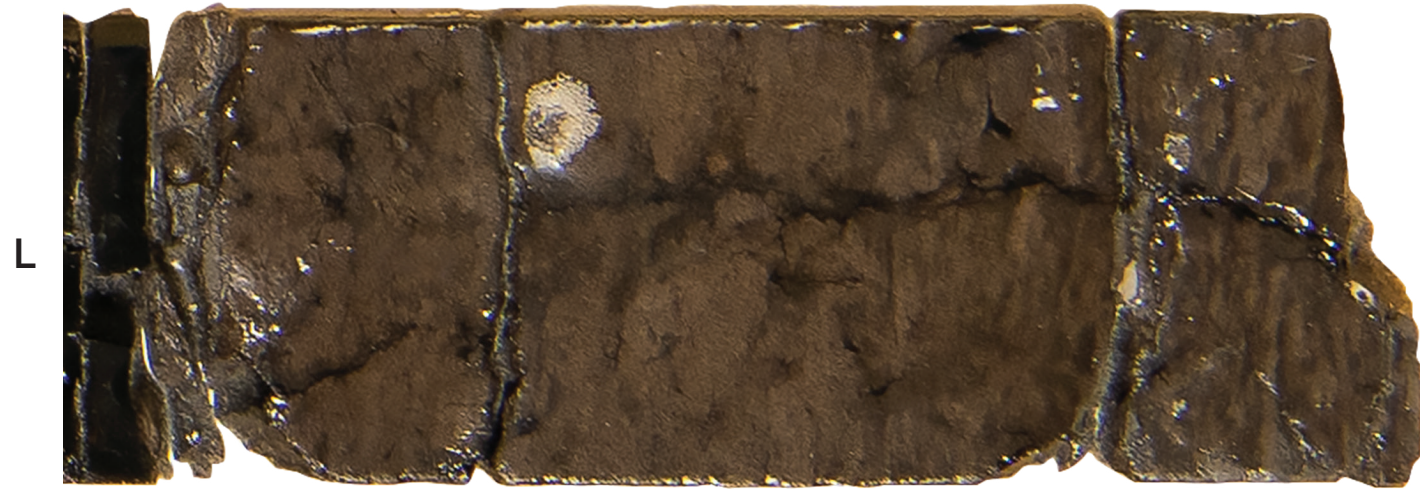
COAL

4.3

4.4

4.5

4.6



SILTSTONE

4.7

4.8

4.9



QGC



QUEENSLAND MUSEUM NETWORK



Queensland Government

FUTURE MAKERS